



# Carhartt® Tall Midweight Hooded Sweatshirt CTTK121



Sometimes Mother Nature can't make up her mind. This sweatshirt works perfectly as a layer or by itself, allowing you to adapt with the weather.

- 10.5-ounce, 50/50 cotton/poly blend or 59/41 cotton/poly blend (Black, Carbon Heather, Moss, New Navy)\*
- 70/30 cotton/poly blend (Heather Grey)
- Attached three-piece hood with draw cord closure
- Front hand warmer pocket
- Stretchable, spandex-reinforced, rib knit cuffs and waistband
- Carhartt-strong, triple-stitched main seams
- Carhartt label sewn on hand warmer pocket
- Loose fit

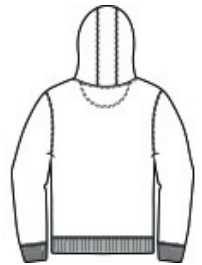
\*Please note: Select colors in Carhartt fleece are currently transitioning from a 50/50 cotton/poly blend to a 59/41 cotton/poly blend. Weight and fabric properties remain the same. Your order may contain a combination of both fabrics.

### CARE INSTRUCTIONS

Machine Wash Cold Like Colors. Do Not Bleach. Tumble Dry Low.



front



back

### HOW TO MEASURE



#### CHEST WIDTH

Measure under the arm and around the fullest part of the chest with arms down, keeping tape horizontal.

### SIZE CHART

	LT	XLT	2XLT	3XLT
Chest	42-44	46-48	50-52	54-56

### COLOR INFORMATION



Black  
PMS BLACK C



Carbon Heather  
PMS 7540C



Heather Grey  
PMS COOL GREY  
6C



Moss  
PMS 7770C



New Navy  
PMS 533C