



Carhartt® Sherpa-Lined Coat CT104293

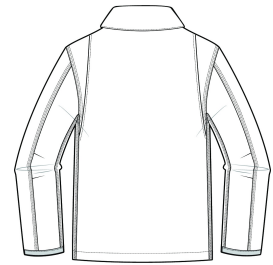


Classic Carhartt style meets Carhartt durability in this coat which features our signature cotton duck fabric for a tough exterior and a soft sherpa lining for warmth and comfort.

- 12-ounce, 100% ring spun cotton washed duck
- 100% polyester filling
- Sherpa-lined body for warmth
- Quilted-nylon lined sleeves for easy on-and-off
- Under-collar snaps for optional hood (sold separately)
- Pleated bi-swing back for additional range of motion
- Left chest pocket with zipper closure
- Two interior pockets
- Two large, sherpa-lined handwarming front pockets
- Interior rib knit storm cuffs help keep out the cold
- Carhartt-strong, triple-stitched main seams for added durability
- Carhartt label sewn on left pocket
- Loose fit



front



back

CARE INSTRUCTIONS

Machine Wash Warm Separately. Do Not Bleach. Tumble Dry Low. Do Not Iron Ornamentation. Steam Iron Shell Only.

HOW TO MEASURE



CHEST WIDTH

Measure under the arm and around the fullest part of the chest with arms down, keeping tape horizontal.

SIZE CHART

	S	M	L	XL	2XL	3XL	4XL
Chest	34-36	38-40	42-44	46-48	50-52	54-56	58-60

COLOR INFORMATION

Please note: PMS code information is shown only when an exact match is available.



Black
PMS BLACK C



Carhartt Brown
PMS 463C



Gravel
PMS 11C