



# Carhartt Force<sup>®</sup> 1/4-Zip Long Sleeve T-Shirt CT104255

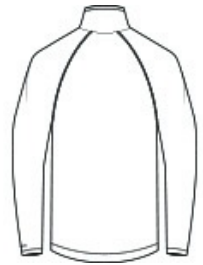


This mid weight 1/4-zip tee fights sweat and stains and is built for hard work thanks to Carhartt Force<sup>®</sup> technology.

- Durable 5.75-ounce, 65/35 cotton/poly stretch plaited jersey knit
- 59/41 cotton/poly stretch plaited jersey knit (Heather Grey)
- 60/40 poly/cotton stretch plaited jersey knit (Carbon Heather)
- Carhartt Force<sup>®</sup> technology wicks sweat, dries fast and fights odors
- FastDry<sup>®</sup> technology keeps you cool for all-day comfort
- Stain Breaker<sup>®</sup> technology releases stains
- UPF 25+
- Raglan sleeves to increase range of motion
- Contrast color neck tape
- Tagless neck label
- Smooth flatlock seams
- Carhartt label sewn on left chest pocket
- Carhartt Force<sup>®</sup> labeling on left sleeve
- Relaxed fit



front

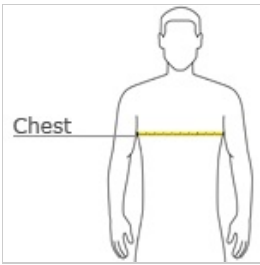


back

### CARE INSTRUCTIONS

Turn Garment Inside Out. Machine Wash Warm Like Colors. Non-Chlorine Bleach. Tumble Dry Low. Do Not Use Fabric Softeners. Cool Iron. Do Not Iron Ornamentation. Do Not Dry Clean. Exclusive Trimming.

### HOW TO MEASURE



#### CHEST WIDTH

Measure under the arm and around the fullest part of the chest with arms down, keeping tape horizontal.

### SIZE CHART

	S	M	L	XL	2XL	3XL	4XL
Chest	34-36	38-40	42-44	46-48	50-52	54-56	58-60

### COLOR INFORMATION



Black  
PMS BLACK C



Carbon Heather  
PMS 7540C



Heather Grey  
PMS COOL GREY  
6C



Navy  
PMS 533C