



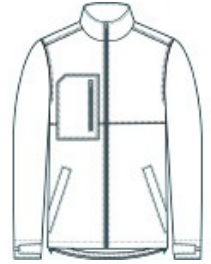
Tough jobs call for tough workwear and this water-resistant soft shell fits the bill with a roomy fit for easy layering over hoodies and work shirts.

- 100% polyester shell with water-resistant finish bonded to water-resistant film insert and a 100% polyester brushed microfleece lining
- Fabric waterproof rating: 1000MM
- Fabric breathability rating: 1000G/M2
- Triple-needle stitching
- Vertical zippered right chest pocket
- Reinforced front pockets
- Exposed center front zippered closure with longer pull
- Self-fabric adjustable tab cuffs with hook and loop closures
- Adjustable draw cord hem

\*\*

**CARE INSTRUCTIONS**

Machine Wash Cold. Only Non-Chlorine Bleach, When Needed. Do Not Use Fabric Softener. Tumble Dry Low. Cool Iron, If Necessary. Do Not Dry Clean.



front



back

**HOW TO MEASURE**



**CHEST WIDTH**

Measure under the arm and around the fullest part of the chest with arms down, keeping tape horizontal.

**SIZE CHART**

	XS	S	M	L	XL	2XL	3XL	4XL
Chest	32-34	35-37	38-40	41-43	44-46	47-49	50-53	54-57

**COLOR INFORMATION**



Black  
PMS BLACK C



Iron Grey  
PMS 7540C



Navy  
PMS 532C