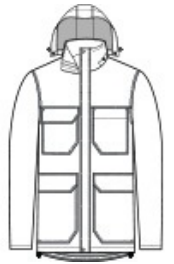


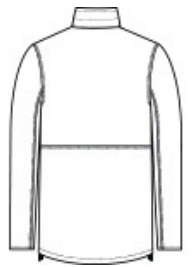


Insulated and fully seam-sealed, this weather-resistant parka is built to protect you from the elements so you can take on almost any tough work environment.

- 100% polyester w oven 300-denier oxford shell w ith durable w ater-repellent (DWR) finish
- 5.2-ounce, 100% polyfill insulation diamond quilted body
- 3.5-ounce, 100% polyfill insulation diamond quilted hood and sleeves
- Fabric w aterproof rating: 5000MM
- Fabric breathability rating: 5000G/M2
- Triple-needle stitching
- Rivet and snap details throughout
- Fully seam-sealed
- Adjustable, snap-removable hood
- Full-length exterior storm flap w ith snap closure
- Four front bellow ed pockets w ith flaps and hook and loop closures, side entries
- Molded center front zippered closure
- Open cuffs w ith interior rib knit
- Adjustable draw cord hem
- Decoration access pocket



front

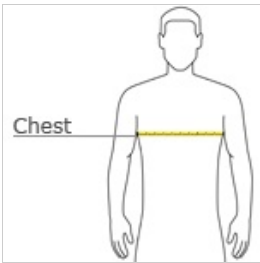


back

CARE INSTRUCTIONS

Machine Wash Cold. Do Not Use Softener. Only Non-Chlorine Bleach When Needed. Tumble Dry Low. Cool Iron, if Necessary. Do Not Dry Clean.

HOW TO MEASURE



CHEST WIDTH

Measure under the arm and around the fullest part of the chest w ith arms dow n, keeping tape horizontal.

SIZE CHART

| | XS | S | M | L | XL | 2XL | 3XL | 4XL |
|-------|-------|-------|-------|-------|-------|-------|-------|-------|
| Chest | 32-34 | 35-37 | 38-40 | 41-43 | 44-46 | 47-49 | 50-53 | 54-57 |

COLOR INFORMATION

Please note: PMS code information is shown only when an exact match is available.



Black
PMS BLACK C



Iron Grey
PMS 7540C



Navy
PMS 532C