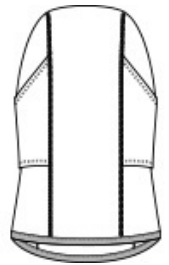




- 94/6 poly/spandex
- Brushed fleece interior
- Can easily stretch opening under nose and mouth for additional breathability
- Articulated seams at neck and sides of face for fit



front



back

SIZE CHART

| | OSFA |
|---------------|--------|
| Beanie Width | 10 5/8 |
| Beanie Length | 17 |

COLOR INFORMATION

Please note: PMS code information is shown only when an exact match is available.



Black
PMS BLACK C



Charcoal
PMS 426C



Navy Blue
PMS 532C