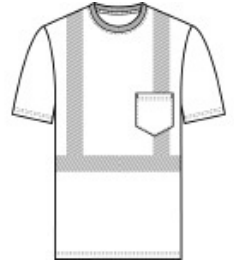
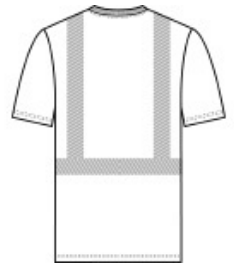


This breathable, moisture-wicking mesh tee delivers high visibility and comfort in Class 2 environments.

- 4.1-ounce, 100% polyester birdseye mesh
- 1x1 rib knit neck
- Back neck tape
- Segmented, durable, reflective 2-inch tape meets ANSI 107 requirements and provides 360-degree visibility on body and easy movement
- Left chest pocket



front



back

**HOW TO MEASURE**



**CHEST WIDTH**

Measure under the arm and around the fullest part of the chest with arms down, keeping tape horizontal.

**SIZE CHART**

	S	M	L	XL	2XL	3XL	4XL	5XL
Chest	35-37	38-40	41-43	44-46	47-49	50-53	54-57	58-60

**COLOR INFORMATION**



Safety Orange



Safety Yellow