



Red Kap® Long Sleeve Striped Industrial Work Shirt. CS10



This hardworking IL50 style has a professional stripe and is tested through 50 industrial launderer washes.

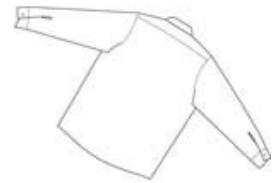
- 4.25-ounce, 65/35 poly/cotton with Touchtex™ technology for superior color retention, stain release and wickability
- Yarn-dyed fabric
- Open collar with sew-in stays
- 7 buttons including button at neck
- Two button-through pockets
- Bartacked pencil stall on left pocket

CARE INSTRUCTIONS

Machine wash, tumble dry.

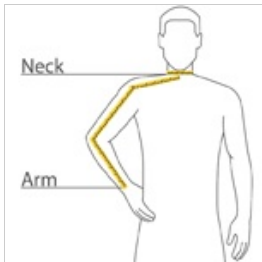


front



back

HOW TO MEASURE



NECK

Measure around the fullest part of the neck at the base.

ARM

Place hand on hip. Start at the center of the back of the neck and measure across the shoulder, to the elbow, and then down to the wrist.

SIZE CHART

| | SR | MR | LR | XLR | 2XLR | 3XLR | 4XLR | 5XLR | 6XLR |
|------|-----------------|-----------------|-----------------|-----------------|-----------------|-----------------|-----------------|-----------------|-----------------|
| Neck | 13 5/8 - 14 1/2 | 14 5/8 - 15 1/2 | 15 5/8 - 16 1/2 | 16 5/8 - 17 1/2 | 17 5/8 - 18 1/2 | 18 5/8 - 19 1/2 | 19 5/8 - 20 1/2 | 20 5/8 - 21 1/2 | 21 5/8 - 22 1/2 |

COLOR INFORMATION

Please note: PMS code information is shown only when an exact match is available.