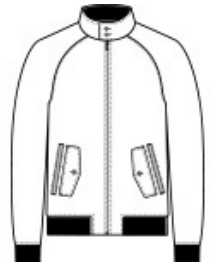
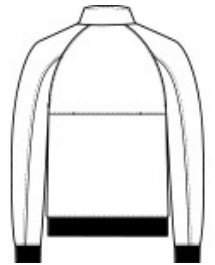




- 100% polyester shell with a durable water repellent (DWR) finish
- 65/35 polyester/cotton Brooks Brothers tartan plaid lining
- 3K/3K waterproof breathable shell fabric
- Metallion coil front zipper with metal Brooks Brothers Golden Fleece logo zipper pull
- Tab collar with faux horn Brooks Brothers logo buttons
- Rib knit cuffs, hem and inside collar
- Raglan sleeves with articulated elbows for ease of movement
- Cape back allows venting for comfort
- Double hand pockets: one flap-secured with faux horn Brooks Brothers logo button, the second alongside it with double kissing welt
- Faux leather label patch
- Brooks Brothers tie-stripe hanging loop
- Interior chest patch pocket with faux horn Brooks Brothers logo button closure
- Brooks Brothers tartan plaid inside hand pockets
- Burgundy piping throughout
- Decoration access pocket



front

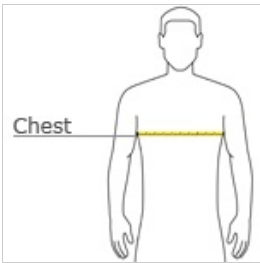


back

CARE INSTRUCTIONS

Machine Wash Cold With Like Colors. Do Not Use Fabric Softener. Do Not Bleach. Tumble Dry Low. Do Not Iron. Do Not Dry Clean.

HOW TO MEASURE



CHEST WIDTH

Measure under the arm and around the fullest part of the chest with arms down, keeping tape horizontal.

SIZE CHART

	4XL	XS	S	M	L	XL	2XL	3XL
Chest	57-61	32-34	35-37	38-40	41-43	44-47	48-51	52-56

COLOR INFORMATION

Please note: PMS code information is shown only when an exact match is available.



Deep Black
PMS BLACK C



Night Navy
PMS 4280C