



Brooks Brothers® Mid-Layer Stretch 1/2-Button BB18202

Structured double-knit style with a luxuriously soft hand, this pullover skips the traditional zipper in favor of a relaxed, elevated look.

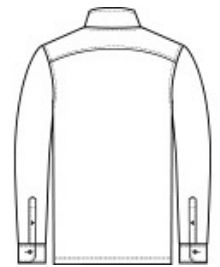
- 8-ounce, 76/22/2 polyester/rayon/spandex double-knit
- Cadet collar
- Faux horn buttons with Brooks Brothers logo
- Rounded buttoned cuffs

CARE INSTRUCTIONS

Machine Wash Cold With Like Colors. Do Not Use Fabric Softener. Do Not Bleach. Tumble Dry Low. Remove Promptly. Cool Iron If Necessary.



front



back

HOW TO MEASURE



CHEST WIDTH

Measure under the arm and around the fullest part of the chest with arms down, keeping tape horizontal.

SIZE CHART

	XS	S	M	L	XL	2XL	3XL	4XL
Chest	32-34	35-37	38-40	41-43	44-47	48-51	52-56	57-61

COLOR INFORMATION

Please note: PMS code information is shown only when an exact match is available.



Aegean Blue Heather
PMS 2139C



Black Heather
PMS 426C



Navy Blazer Heather
PMS 533C



Pine Heather
PMS 446C



Windsor Grey Heather
PMS 426C