



Brooks Brothers® Women's Casual Oxford Cloth Shirt BB18005

Originally invented in 1900, this iconic silhouette embodies the off-duty professional look whether you dress it up or keep it casual.

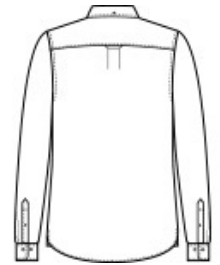
- 5-ounce, 100% cotton oxford
- Garment-washed
- Button-down collar
- Button at center back collar
- Box pleat and locker loop at back yoke
- Pearlized buttons with Brooks Brothers logo
- Gussets at side seam
- Rounded, adjustable cuffs

CARE INSTRUCTIONS

Machine Wash Cold With Like Colors. Do Not Bleach. Tumble Dry Low. Remove Promptly. Cool Iron If Necessary.

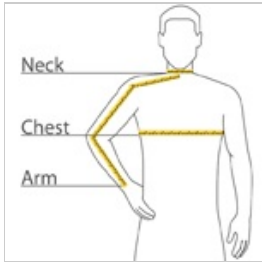


front



back

HOW TO MEASURE



CHEST WIDTH

Measure under the arm and around the fullest part of the chest with arms down, keeping tape horizontal.

NECK

Measure around the fullest part of the neck at the base.

ARM

Place hand on hip. Start at the center of the back of the neck and measure across the shoulder, to the elbow, and then down to the wrist.

SIZE CHART

	XS	S	M	L	XL	2XL	3XL	4XL
Size	2	4/6	8/10	12/14	16/18	20/22	24/26	28/30
Bust	32-34	35-36	37-38	39-41	42-44	45-47	48-51	52-55

COLOR INFORMATION

Please note: PMS code information is shown only when an exact match is available.



Newport Blue
PMS 7681C



Soft Mint



Soft Pink
PMS 2050C



White



Windsor Grey