



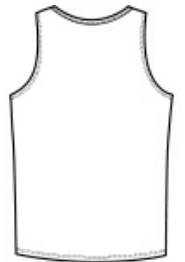
- 4.3-ounce, 100% combed ring spun US cotton, 30 singles
- 90/10 combed ring spun cotton/poly (Heather Grey)
- 100% cotton thread on White
- Relaxed fit side-seamed body
- Tear Away label; transitioning to recycled material

**CARE INSTRUCTIONS**

Maximum Washing Temperature 30C. Wash Inside Out With Like Colors. Only Oxygen/Non-Chlorine Bleach Allowed. Tumble Dry At Low Temperature, Max 60 C. Do Not Iron. Do Not Dry Clean.



front



back

**HOW TO MEASURE**



**CHEST WIDTH**

Measure under the arm and around the fullest part of the chest with arms down, keeping tape horizontal.

**SIZE CHART**

|       | XS    | S     | M     | L     | XL    | 2XL   |
|-------|-------|-------|-------|-------|-------|-------|
| Chest | 35-36 | 37-38 | 39-40 | 41-42 | 43-44 | 45-46 |

**COLOR INFORMATION**



Asphalt  
PMS CG11C



Black  
PMS B6C



Heather Grey  
PMS CG5C



Lapis  
PMS 2756C



Navy  
PMS 2767C



New Silver  
PMS CG4C



Red  
PMS 200C



White  
PMS 000C