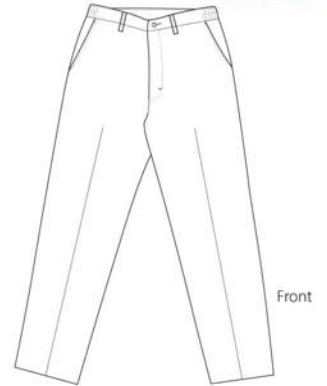
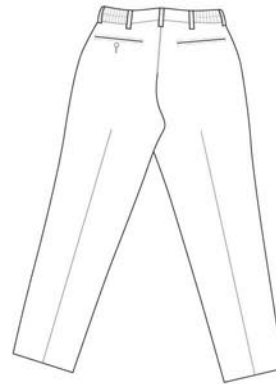


# Elastic Insert Pant



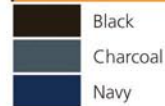
## PT60

- \* 7.5-ounce \* 65/35 poly/cotton twill \* IL50 certified \* Side elastic inserts in waistband
- \* Two front and two back pockets

### Care Instructions:

Machine wash, tumble dry.  
Meets IL50 specifications

### Colors



### Please Note:

Colors shown are approximate and for reference only. For closest match see PMS colors, or for exact match, returnable samples and grommeted samples are available.

### Finished Measurements in Inches

Size	27/28	29/30	31/32	33/34	35/36	37/38	39/40	41/42
Waist Extended	30	32	34	36	38	40	42	44
Waist Relaxed	26.5	28.5	30.5	32.5	34.5	36.5	38.5	40.5
Avail. Lengths	37U	30, 32, 37U	30, 32, 34, 37U	30, 32, 34, 37U	30, 32, 34, 37U	30, 32, 34, 37U	30, 32, 37U	30, 32, 37U
Cuff Opening	16.75	17	17.25	17.5	17.75	18	18.25	18.5
43/44	45/46	47/48	49/50	51/52	53/54	55/56	57/58	59/60
46	48	50	52	54	56	58	60	62
42.5	44.5	26.5	28.5	50.5	52.5	54.5	56.5	58.5
30, 32, 37U	30, 37U	37U	37U	37U	37U	37U	37U	37U
18.75	19	19.25	19.5	19.75	20	20.25	20.5	20.75

### Color Chart

<b>Base Color</b>	Black
Textile PMS	19-4006TC
General PMS	Process Black
<b>Base Color</b>	Charcoal
Textile PMS	19-3908TC
General PMS	432C
<b>Base Color</b>	Navy
Textile PMS	19-3925TC
General PMS	539C

Waist measured by circumference. Length measured by inseam. Back pocket measured at opening. Cuff opening measured by circumference.

(U) Indicates unfinished hem.

Hemming service available in 1/2" increments on unfinished styles.